

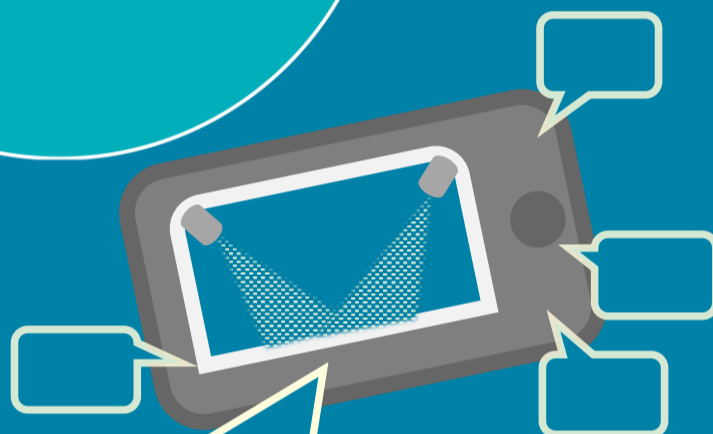
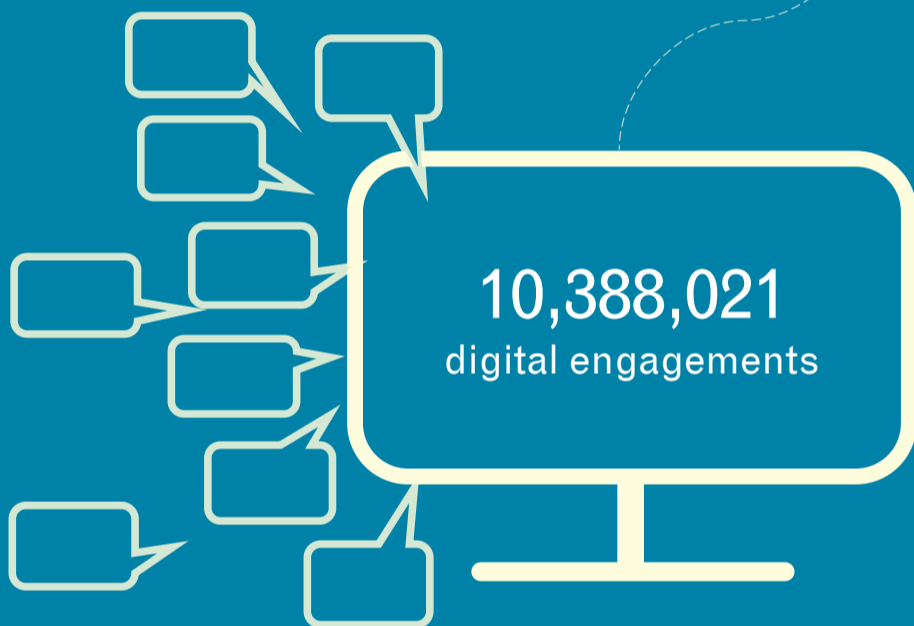
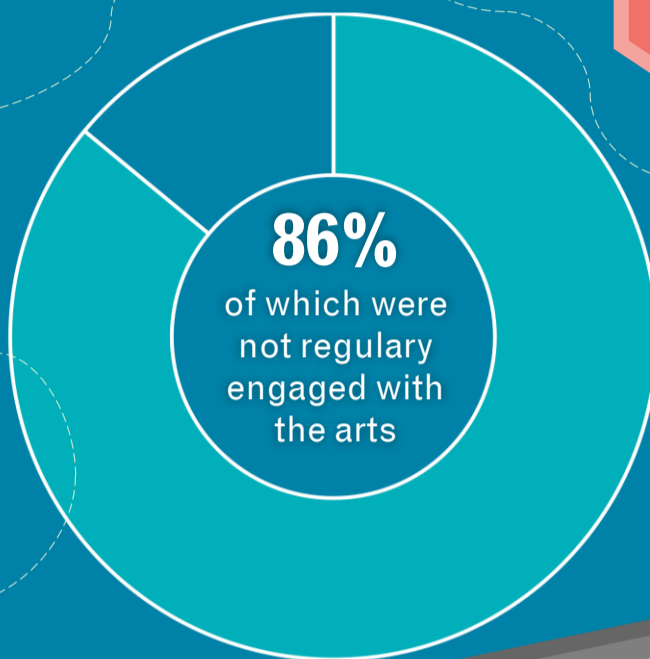
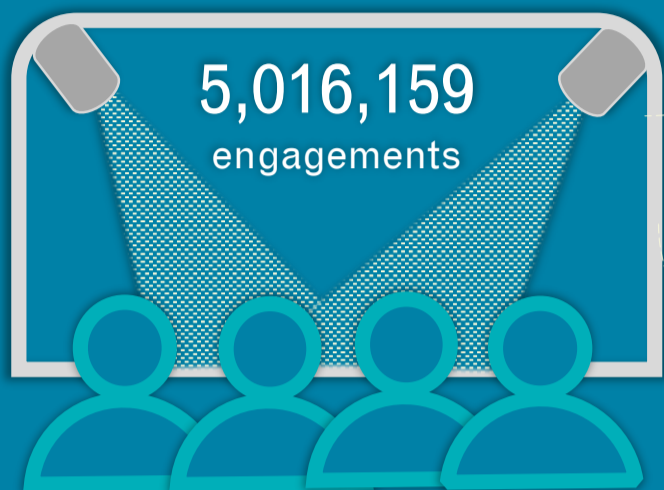
**CREATIVE  
AND  
PEOPLE  
PLACES**

# ARTS AND CULTURE SHAPED BY PEOPLE AND PLACE:

Inspiring more people to take  
part in arts and culture

**33**  
places  
across  
England

Since the programme began:



**15,620**  
volunteers

**106,851**  
volunteer hours

**£866,535**  
value of volunteer time



[www.creativepeopleandplaces.org.uk](http://www.creativepeopleandplaces.org.uk)



Supported using public funding by

**ARTS COUNCIL  
ENGLAND**

Live to Digital: Activity produced for "real life" consumption, captured for digital distribution. e.g. recording a live performance. The above figures are subject to change. Creative People and Places data has been provided by organisations quarterly since 2013. Methods used to collect this data have changed over the years: entire questions and multiple-choice options within questions have changed. This data is updated every quarter, following the submission of data reports by all Creative People and Places projects. **September 2020**